

High performance laminated board for insulation of concrete soffits.

It is ideal for use in car parks and other semi exposed situations in both new build and refurbishment projects.

The board is mechanically fixed directly to the concrete soffit or to timber battens or metal support sections. SQ Board SL offers the most practical and cost effective solution for refurbishment projects and new build.

Unrivalled Product Range

SQ Board SL consists of a 6mm SQ Board providing Class A1 non-combustible fire protection factory bonded to rigid insulation.

The insulation material and thickness is dependant on the target UValue and application criteria. The options available are listed below:

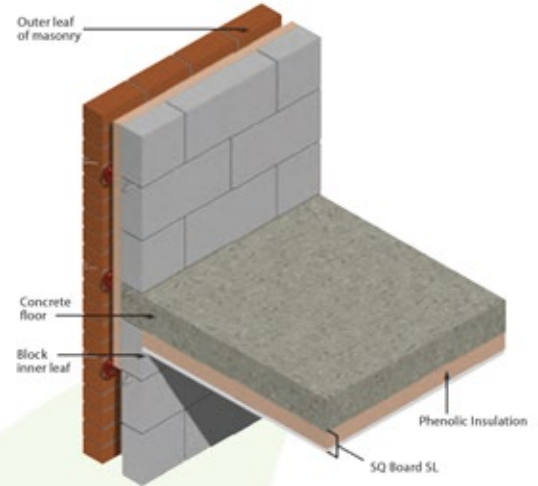
Applications

SQ Board SL Ref	Application	Board Size	Insulation
PHL	Rigid Phenolic Foam for thermal insulation	1200 x 2400mm	50 to 120mm
PIR	Rigid PIR Foam for thermal insulation	1200 x 2400mm	25 to 150mm

U Value W / m2k	SQ Board SL Soffit Liner Insulation Thickness	
	PHL	PIR
0.25	70mm	75mm
0.22	80mm	90mm
0.20	90mm	100mm
0.18	100mm	110mm
0.16	110mm	120mm

Typical U Values

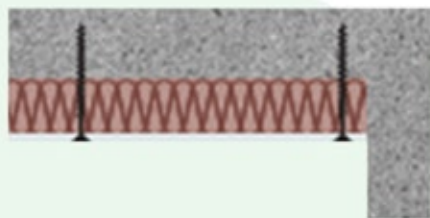
Illustrated below is a range of U values that can be achieved using the various different insulation materials when fixed directly to underside of a concrete soffit.



If your design requirements are not contained in the above then please contact us so we can calculate the products needed to meet your target U value.

Direct Fixing to Concrete Soffit

- Fix SQ Board SL directly to the under side of the semi-exposed soffit using proprietary fixings.
- Use fixings at 400mm centres around the edge and throughout the board.
- The length of fixing is determined by the board thickness and the fixing manufacturer's load-bearing recommendations.

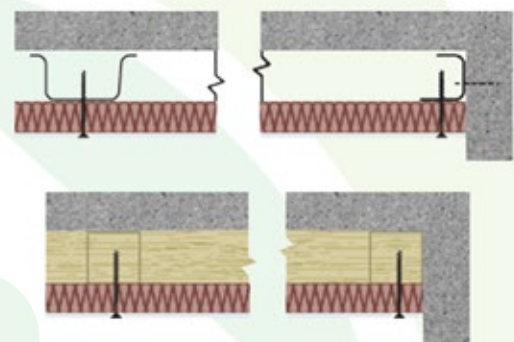
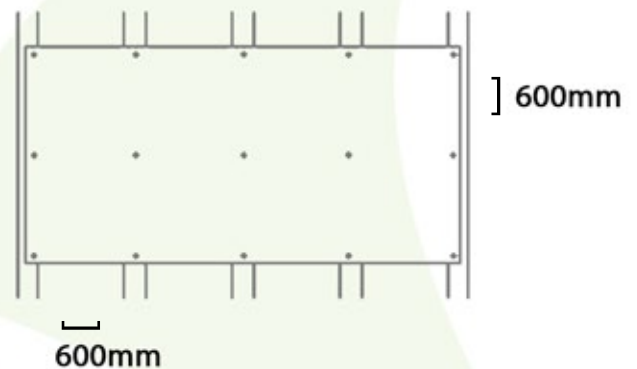


Cutting and Storage

- SQ Board SL can be cut using a fine toothed hand or power saw. The boards should be stored off the ground and must be covered to ensure they are protected from the elements.

Fixing to Metal Framing and Timber Battens

- When using MF system framing, fix the frame to the soffit as per the manufacturer's recommendations.
- Fix SQ Board SL at right angles to the MF5 top hat sections at 600mm centres around the edges and throughout the board using SQ Board screws.
- When using timber battens, these must be fixed at maximum 600mm centres using SQ Board screws ensuring that all four edges of the board are supported.
- Fixings must be allowed to penetrate a minimum of 25mm into the timber.



Contact Details

Ivy House
Liverpool Street
Salford
Manchester
M5 4LY